

AD-8918

INSTRUCTION MANUAL

owners-AD-8918-v.1.a 89.03.24 BLP

DIGITAL DISPLAY UNIT

AD
A&D Company, Ltd.



Contents

Warranty	page	2
Compliance with FCC Rules	page	2
Welcome!	page	3
Features	page	3
Options	page	3
Specifications	page	3
Installation	page	4
Unpacking	page	4
Things to Know	page	4
Balance / Scale Settings	page	5
Opening the Case	page	6
AD-8918 Digital Display Setup	page	6
Connect	page	7
Power ON	page	7
Cleaning and Changing the Fuse	page	9
Dimensions	page	9



Warranty

Warranty rights vary from country to country but it is the general intention of A&D Co., Ltd., to offer customers a one year warranty on this product from the day it is purchased. In some countries consumer protection legislation states that your dealer is responsible for offering a warranty and under these circumstances please refer to your local dealer.

In the U.S.A. the product (if defective) should be returned, freight prepaid by the customer, to A&D Engineering Inc. in California and in Europe the product can be returned freight prepaid to A&D Instruments GmbH in Frankfurt, West Germany. Elsewhere the product can be returned to A&D Co., Ltd. in Japan. In any event please contact your nearest A&D office, before shipping, to confirm that the product is covered by this warranty. Simple repairs can be carried out by your local dealer under warranty and this may be the fastest method of solving your problem.

This warranty only applies to product failures due to defective materials and/or workmanship. This warranty will be rendered invalid if, upon inspection, it is found that the product was: Abused; used for a purpose for which it was not designed; mishandled; placed in a hostile environment; repaired by unauthorized personnel; improperly installed or not adjusted in accordance with instructions given in this manual.

If repair under warranty is confirmed by A&D, then the product will be repaired (or replaced, at the discretion of A&D) and then returned to the customer at no extra cost.



Compliance with FCC Rules

Please note that this equipment generates, uses and can radiate radio frequency energy. This equipment has been tested and has been found to comply with the limits of a Class A computing device pursuant to Subpart J of Part 15 of FCC rules. These rules are designed to provide reasonable protection against interference when equipment is operated in a commercial environment. If this unit is operated in a residential area it might cause some interference and under these circumstances the user would be required to take, at his own expense, whatever measures are necessary to eliminate the interference.

(FCC = Federal Communications Commission in the U.S.A.)



Welcome!

Thank You for Your A&D Purchase!

Electronic Instruments are in one sense extremely simple products, that is they are very easy to use. In another sense they are rather complex in that they are high technology products, having many features available. This manual will try to tell you simply how your display unit works and how to get the most out of it in terms of performance.



Features

- The Model AD-8918 is an external display unit that displays weight data sent through the RS-232C interface or the current loop of an electronic scale.
- Applicable models are the: EK, EW, FV, FW, EP, FA, FB, FX, FY, ER, and FR series.



Options

- Support Option OP-01
The AD-8918 can be attached on the back of the FX/FY series by using this optional support attachment.



Specifications

Power supply	AC adaptor AC 100V (±10%) 50/60 Hz
Baud Rate	600 or 2400 selectable
Terminator	<CR> <LF>
Signal Form	Data bit length 7 bits
Parity	Even
Stop Bit	1 bit
Data Receiving Mode	Stream mode
Data Format	A&D standard format
Max. Rewriting Speed	Approx. 7 times/sec. (at 2400 bps)
Total Weight	560g (excluding AC adaptor)
Dimensions	Overall: 91(h) x 167(w) x 93(d) Panel: 87(h) x 167(w)

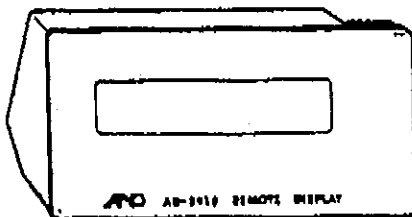


Installation

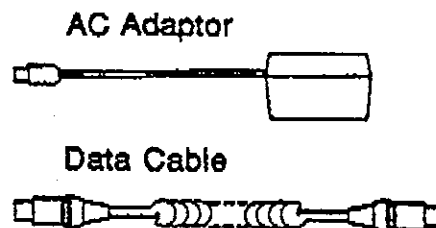


Unpacking

- ❑ Unpack the display unit carefully and keep the packing material if you are likely to transport it again in the future.
- ❑ In the carton you should find this manual plus:
 - AD-8918 Main Unit.
 - AC Adaptor
 - Data Cable (KO: 683).
 - Fuse (315mA time lag).



AD-8918 Main Unit



AC Adaptor

Data Cable



Things To Know

- ❑ Before you can use your AD-8918, you must make sure that it has been properly set to correctly receive the data.
- ❑ If you are using an ER, FR, or FX/FY, then you must decide if you want to use the RS-232C or the current loop, and at what baud you wish to send at.
 - If you are using the current loop and sending at 2400 baud, then simply find your balance on the following page and set its output parameters accordingly, no settings are required to the AD-8918. Go to the cc section page 7.
 - If you want to use the RS-232C, then you must purchase the optional cable KO:254 (in 2.5, 3.5 or 4.5 m lengths) and set the AD-8918 accordingly.
 - If you set the output speed to 600 bps, then you must set the AD-8918's switch S2 to '600' accordingly. Please remember that when the baud rate is 600 bps, then the display rewriting speed of the AD-8918 becomes about 2 times per second.
- ❑ If you are using an EK, EW or FV/FW, then you must use the RS-232C, and set the AD-8918's switch S2 to '232' accordingly.

Balance / Scale Settings

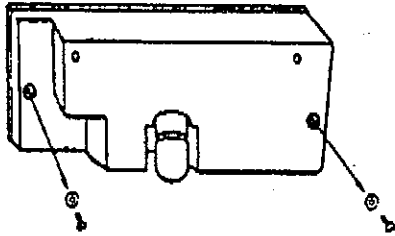


This table shows the settings required for each Series. Please consult your owners manual if you need more information on setting your balance. How to set the AD-8918 is shown on the following pages.

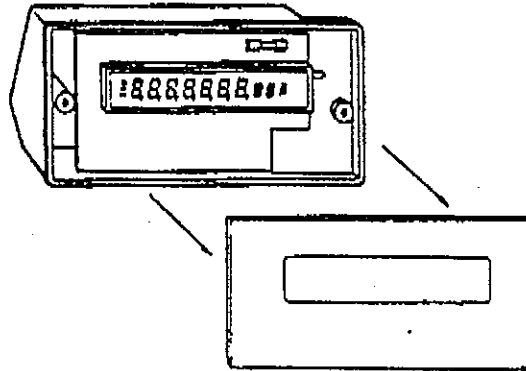
Series	Settings	AD-8918 Slide Switches
EK	No Settings	
EW	No Settings	
FX/Y	C3- 4 [Stream] C4- 0 [600] or 2 [2400]	
ER	sw1 = OFF ↑ [600] or ON ↓ [2400] and also sw6 = OFF ↑ sw2 = ON ↓ [Stream] sw3 = OFF ↑ [<CR> <LF>] sw4 = OFF ↑ [SWITCH input] sw5 = OFF ↑ [STOP CONTROL]	
FR	Print 4c3 [Stream] bPS 0c3 [600] or 2c3 [2400] PAR 0c3 [Even] bit 0c3 [7 bits] StoP 0c3 [1 bit] CrLF 0c3 [<CR> <LF>] tYPE 0c3 [A&D Standard] dP 0c3 [2EH(.)]	
FV FW	No Settings	

Opening the Case

(1) Unscrew the 2 screws on the back side of unit



(2) Remove the filter



AD-8918 Digital Display Unit Setup

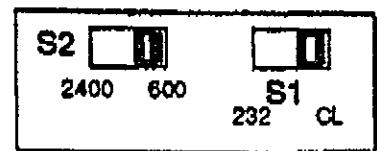
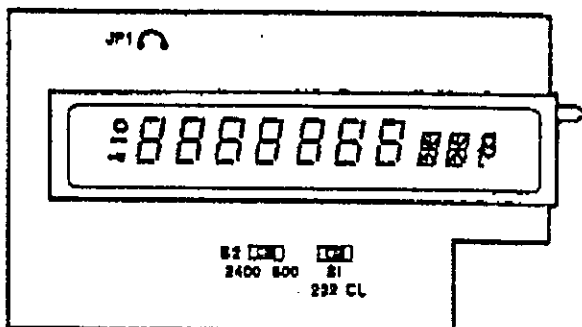


If you need to set the AD-8918:

- Set dip switch S1 to receive either RS-232C (232) or Current Loop (CL) input.
- Set dip switch S2 to receive either 600 or 2400 baud input.

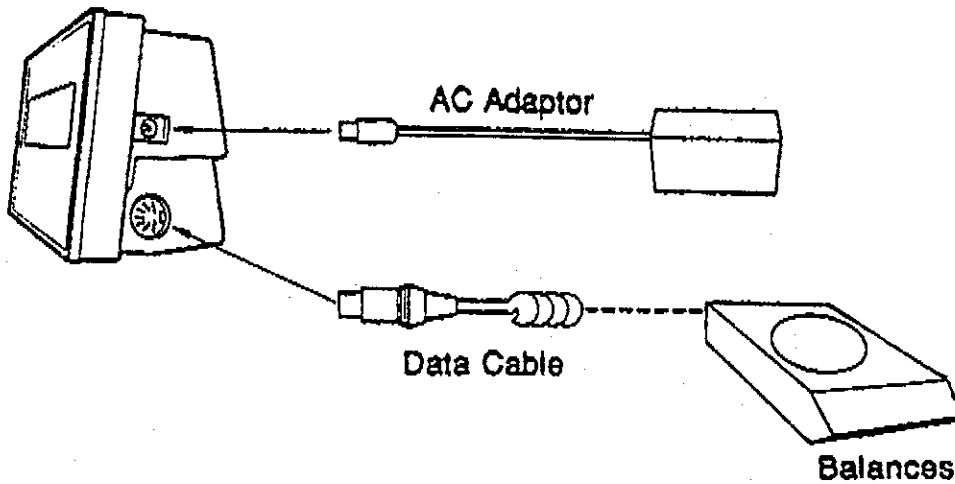
JP1	Decimal Point	
Shorted	.	
Open	,	

- If you wish to change the display's decimal point from a point (.) to a comma (,), then cut the wire at JP1 to open the circuit.



Connect

- Using the cable, connect the balance or scale with the AD-8918.



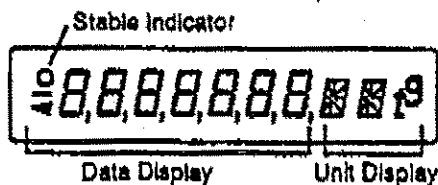
Power ON



After the power is turned ON, the display will come on with all segments lit for a few seconds, then the unit will start displaying the data sent from the balance or scale. There may be some difference between the balance or scale display and the AD-8918's display, for example:

Series	Unit of display on Balance or Scale	Unit of display on the AD-8918
EK, EW	pcs	<u>cnt</u>
FV, FW	pcs	<u>cnt</u>
	%	<u>Pct</u>
FX, FY	A - g	<u>g</u>
ER, EP	None	Actual unit of measurement

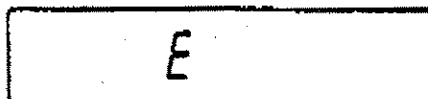
- Full display. The Stable indicator will go ON when the display is stable.



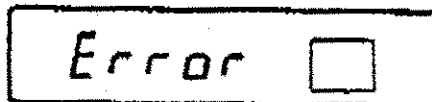
- When no data is being sent, the display will show '-----'.



- If there is an OVER LOAD the display will show 'E'.



- If there is an error the display will show 'Error'.



- If there is an error that you suspect is from the AD-8918 connection, look at the table on page 4, and check the setup according to the following steps.

(1) Does the baud rate of the AD-8918 match that of the balance or scale?

(2) Is the balance unit set as follows?

Data bit length: 7 bits

Parity: Even

Stop bit: 1 bit

(3) Is the terminator on the balance set as <CR> or <LF>?

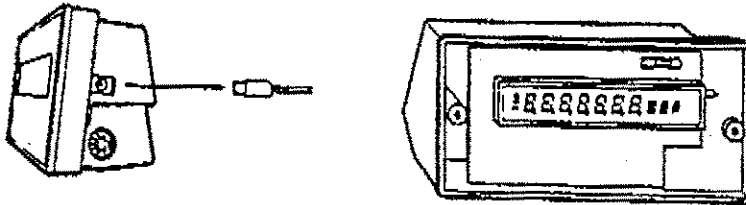
(4) Is the FR data set in A&D standard format?

- If an error occurs even when the above items are currently set, contact your A&D representative.

Cleaning and Changing the Fuse

- ❑ If the main unit becomes dirty, wipe it with a soft cloth (i.e. gauze) and mild soap. Never use any solution such as paint thinner.
- ❑ If all display segments do not come ON, then check the fuse. If the fuse blows again after being replaced, the problem is probably with the main unit. In this case, contact a service technician

(1) Unplug the power cord (2) Remove the filter (3) Replace the fuse



Dimensions

