

## Specifications

|                                | UA-1200BLE  | UB-1100BLE  |
|--------------------------------|---|---|
| Measurement method             | Oscillometric measurement   | Oscillometric measurement   |
| Display type                   | OLED  | OLED  |
| Measurement range              | Pressure: 0 - 299 mmHg<br>Systolic pressure: 60 - 279 mmHg<br>Diastolic pressure: 40 - 200 mmHg<br>Pulse: 40 - 180 beats / minute | Pressure: 0 - 299 mmHg<br>Systolic pressure: 60 - 279 mmHg<br>Diastolic pressure: 40 - 200 mmHg<br>Pulse: 40 - 180 beats / minute |
| Measurement accuracy           | Pressure: ±3 mmHg<br>Pulse: ± 5 %   | Pressure: ±3 mmHg<br>Pulse: ± 5 %   |
| Power supply                   | 3.7 V Li-ion 325 mAh  | 3.7 V Li-ion 325 mAh  |
| Number of measurements         | Approx. 100 times   | Approx. 100 times   |
| Cuff                           | Arm circumference 22 - 42 cm  | Wrist circumference 13.5 - 21.5 cm  |
| Operation conditions           | +10 °C to +40 °C / 15 to 85 %RH / 800 to 1600 hPa   | +10 °C to +40 °C / 15 to 85 %RH / 800 to 1600 hPa   |
| Transport / Storage conditions | -20 to +60 °C / 10 to 95 %RH  | -20 to +60 °C / 10 to 95 %RH  |
| Dimensions                     | 44 [W] x 126 [H] x 26 [D] mm  | 54 [W] x 76 [H] x 21 [D] mm   |
| Weight                         | Approx. 220 g, including the batteries  | Approx. 90 g, including the batteries   |



<https://youtu.be/B8DghGrw2KA>

For more details → A&D Global Channel

## SDK for Developers



It is possible to create your own applications and connect to our devices. Specifications and communications protocol for all of our ICT devices are available at the following website: [https://link.aandd.jp/SDK\\_EN](https://link.aandd.jp/SDK_EN)

## Compatibility



For compatible smartphones and versions, at the following website: <https://link.aandd.jp/Compatibility>



**A&D Medical Connect**

This is a medical application designed to work with A&D's Connected Blood Pressure Monitor models UA-1200BLE and UB-1100BLE. This application allows you to start a measurement, receive the blood pressure data and check the status of the monitor. If you also install our separate A&D Connect App on the same phone, an application for health tracking, your blood pressure data will be automatically synced to it from this app. This application enables you to manage your blood pressure historical data and print out a summary report.

Please note:

- This application is intended to be used exclusively with A&D Company Limited's UA-1200BLE and UB-1100BLE devices. To measure your blood pressure using this application a UA-1200BLE or UB-1100BLE device is required.
- The information of this application is subject to change without a prior notice.



The Bluetooth® word mark and logos are registered trademarks owned by Bluetooth SIG, Inc. and any use of such marks by A&D Company, Ltd is under license. Other trademarks and trade names are those of their respective owners.

Android, Google Play™, the Google Play™ logo and YouTube are trademarks or registered trademarks of Google LLC.

Apple, the Apple logo, iPhone, iPad, iPod touch and iMessage are trademarks of Apple Inc., registered in the U.S. and other countries. App Store is a service mark of Apple Inc.

Twitter is a registered trademark of Twitter, Inc.

Facebook is a registered trademark of Facebook, Inc.

QR Code is a registered trademark of DENSO WAVE, Inc.



**A&D Company Limited.(JAPAN)**

URL:aandd.jp

**A&D INSTRUMENTS LIMITED(United Kingdom)**

URL:andprecision.com

**A&D INSTRUMENTS INDIA PRIVATE LIMITED(India)**

URL:aanddindia.in

**A&D AUSTRALASIA PTY LTD(Australia)**

URL:andaustralasia.com.au

\*UA-1200 UB-1100BLE-ADCC-IB1-226000



# The smart way to a healthy life



<https://www.aandd.jp/>



Enjoy a healthy and happy life with your family

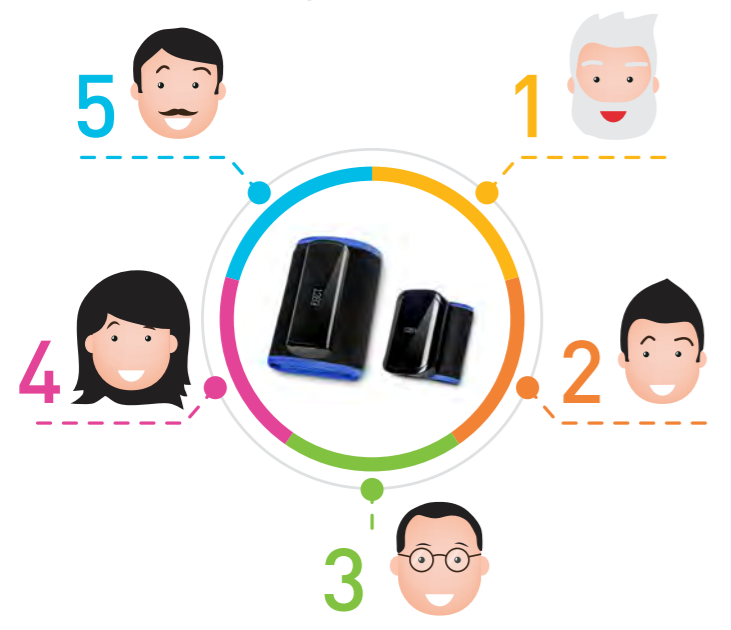
Blood Pressure Monitor  
**UA-1200BLE**  
Upper Arm

Blood Pressure Monitor  
**UB-1100BLE**  
Wrist



- Compact and Comfortable
- Start From App or Device
- Smart Connect
- Multi User (5 Users + 1 Guest)
- Internal Memory of 100 Sessions
- Correct Position Guidance (CPG) \*UB-1100BLE
- IHB Indicator
- Cuff Fit Error Indicator
- Movement Error Indicator

**Multi-user** up to 6 users (5 users + 1 guest)



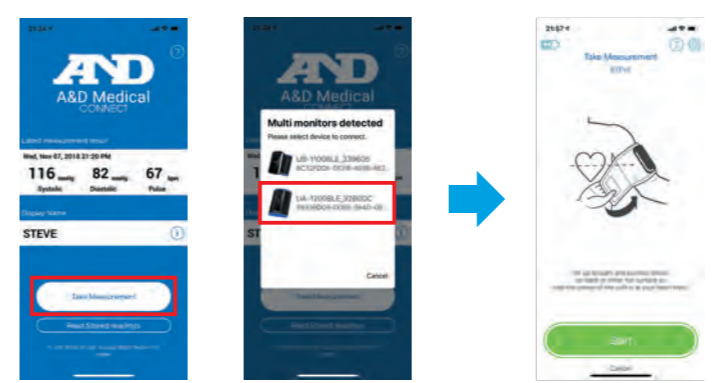
**Connection**



**Provides easy and accurate measurements**

**Smart Connect**

All you need to do is to tap and choose your BPM device in the A&D Connect app to pair. Smart Connect provides effortless pairing.



**Correct Position Guidance (CPG)**

The app indicates your arm position and guide to the correct position.



**Share your results**



Can be used by the entire family



**IHB (Irregular Heartbeat) Indicator**

When the irregular heartbeat rhythm occurs during measurement, the irregular heartbeat indicator will appear on the display. The irregular heartbeat is defined as having heartbeats that fall out of rhythm by a certain value from the average of all heartbeats during the blood pressure measurement.

The "heart" indicator will appear on the device when the irregular heartbeat occurs.

