

WinCT-AD1687

Ver. 1.00

AD1687 Easy Graphing Tool

Copyright (c) 2012 A&D Company limited

Instruction Manual

Contents

1. Outline
2. Terms of Use Agreement
3. Items to Prepare
4. Transmission Preparation
5. Instructions for Graphing
6. Explanation of Graph
7. Saving
8. Displaying the Main Menu

1. Outline

“WinCT-AD1687” (this software) uses an Excel macro program to automatically graph data logged by A&D’s weighing environment logger AD-1687 (hereby referred to as “AD-1687”)

Precautions:

- Before using “WinCT-AD1687”, please be sure to back up any important data on your computer.
- Regarding computers or software besides “WinCT-AD1687”, please contact the original manufacturer.

2. Terms of Use Agreement

- Copying “WinCT-AD1687” without A&D’s permission is prohibited.
- Specifications for “WinCT-AD1687” may change without notice.
- All rights to “WinCT-AD1687” belong to A&D.
- “WinCT-AD1687” is used for graphing data from the AD-1687.
- “WinCT-AD1687” can only be installed and used on the graphing computer’s hard disk or other memory device.
- A&D bears no liability for direct, indirect, special, incidental, or consequential damages resulting from any defect in the WinCT-AD1687 program or the readme file, even when advised of the possibility of such damage. A&D is not responsible for any assertions of rights by third parties. A&D is not responsible or liable for the loss of any programs and/or data stored in the computer on which WinCT-AD1687 is installed, including the costs of recovering said lost programs or data.

Microsoft, Windows, and Excel are trademarks or registered trademarks of Microsoft Corporation.

April 6, 2012

A&D Company, Limited

3. Items to Prepare

3.1 AD-1687

Have the included PC connector mini-B type USB cable ready.

3.2 Computer

A computer capable of operating Microsoft Excel 2000/2002/2003/2007/2010 without issue.

Please ready a copy of Excel as well.

4. Transmission Preparation

Step 1 Use the included PC connector USB cable to connect the computer to the AD-1687.

Step 2 The AD-1687's screen will change to the USB setting screen, so select "CSV FILE" and hit ENTER.

The computer will recognize the device as a removable disk (like it recognizes a USB memory device).



Fig.1

5. Instructions for Graphing

Step 1 Start WinCT-AD1687

If using Excel 2000 to 2003

run WinCT-AD1687 (EN) _2000_2003_V1.00.xls

If using Excel 2007, 2010

run WinCT-AD1687 (EN) _2007_2010_V1.00.xlsm

Step 2-a Enable macros (for Excel 2000)

When a window like that shown in Fig.2 appears, click "enable macros".

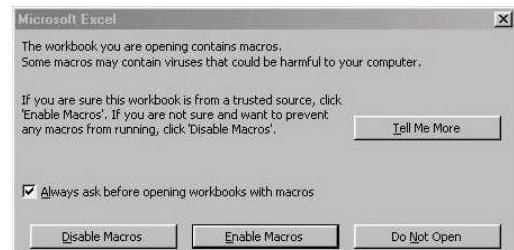


Fig.2

Step 2-b Enable macros (for Excel 2010)

If a window like that in Fig.3 appears, click “Enable Content”.

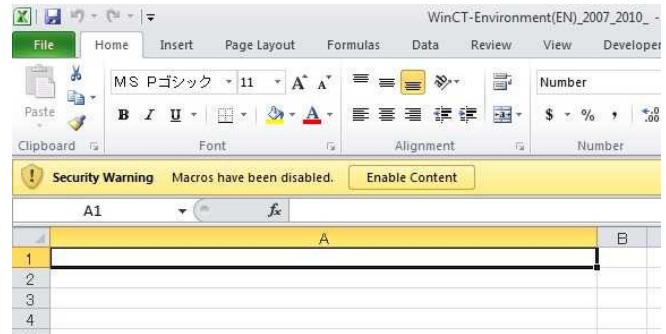


Fig.3

Step 3 Main menu display

A menu like that shown in Fig.4 will be displayed.

* If the main menu doesn't appear, please refer to “8. Displaying the Main Menu”.

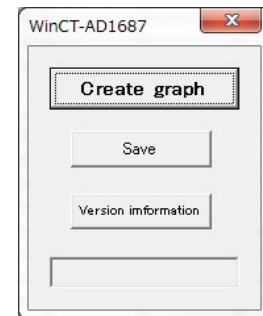


Fig.4

Step 4 Graphing

Click “Create graph” in the main menu.

Step 5 Select the csv file to graph

Select the csv file to graph and click “Open”.

It's possible to select directly from the removable disk (AD-1687). Also, it's possible to select from the csv files of the AD-1687 stored in advance in your memory device of choice.

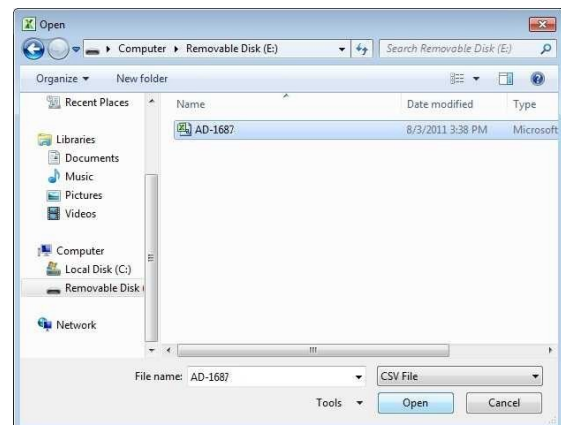


Fig.5

Step 6 Reset the worksheet

A window like that in Fig.6 will come up,
so click “OK”.

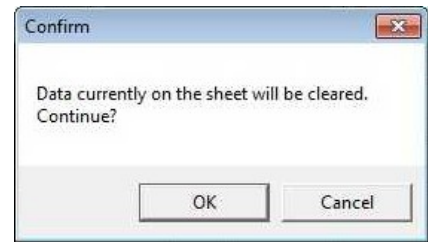


Fig.6

Step 7 Conclude graphing

Graphing can take anywhere from 30 seconds to a few minutes.
The graph processing depends on PC performance and data amount
When the graphing concludes, a window like that in Fig.7 will be
displayed, so click “OK”.

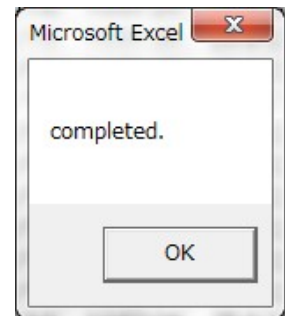


Fig.7

6. Graph

6.1 Explanation of the Graph Created

Graph 1

- Temperature (red, left axis)
- Humidity (green, left axis)
- Barometric pressure (blue, right axis)

- The horizontal line shows date/time.
- The upper left displays each minimum and maximum.

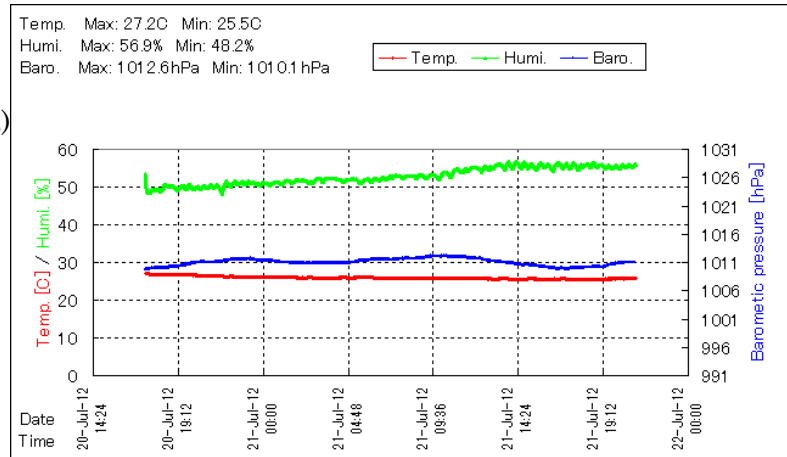


Fig.8

Graph 2

- Temperature (red, left axis)
- Humidity (green, left axis)
- Vibration (gray, right axis)

- The horizontal line shows date/time.
- The upper left displays each minimum and maximum.

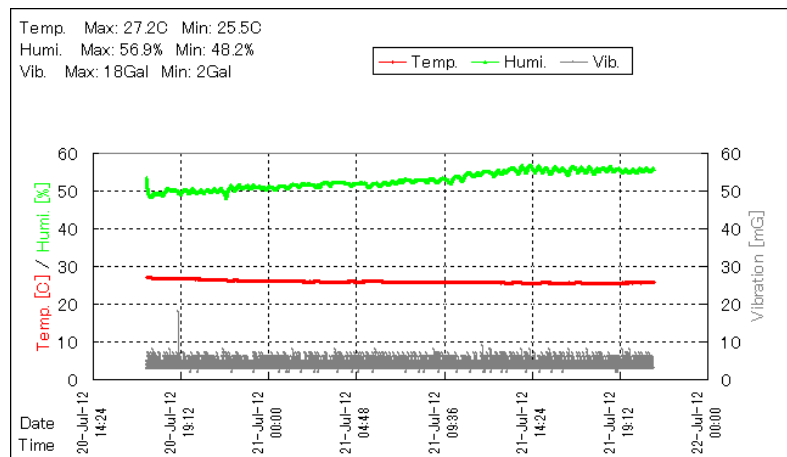


Fig.9

Graph 3 * Only displayed when weighing data is available.

- Temperature (red, left axis)
- Humidity (green, left axis)
- Weighed value (black, right axis)

- The horizontal line shows date/time.
- The upper left displays each minimum and maximum.

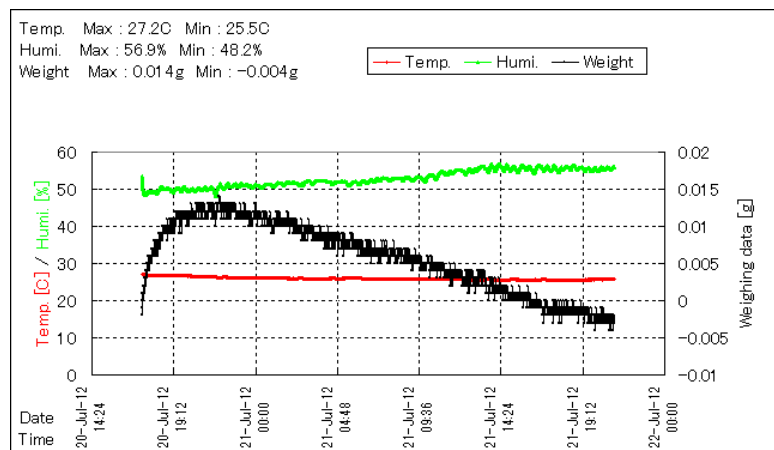


Fig.10

6.2 How to adjust the graph axes

Step 1 Double-click the value displayed on the axle you wish to change.

The “axle format settings” window appears.

Step 2 Please click the “scale” tab.

Input the desired values for minimum, maximum, and scale intervals and press OK.

To change the time axis (horizontal axis), input “year/month/day_hours:minutes” as shown in Fig.11

* _ is a space.

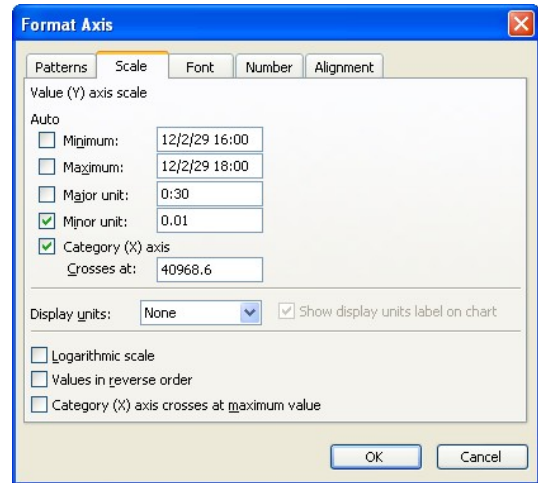


Fig.11

7. Saving

Step 1 Click “save” in the main menu.

※If the main menu does not display, refer to “8. Displaying the Main Menu”.

Step 2 Setting the save destination

Choose the save destination, input the file name, and click “Save”.

* Macro programs will not be included in the saved data.

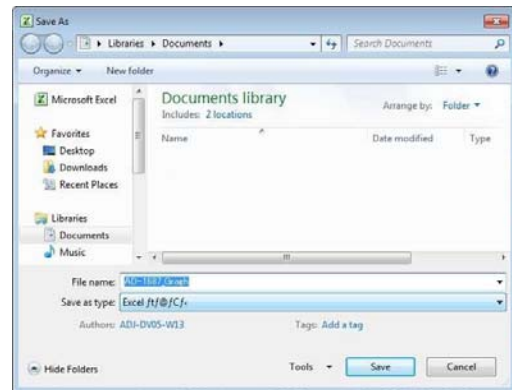


Fig.12

8.a Displaying the Main Menu (for Excel 2000)

Step 1 Displaying macros

In the EXCEL menu, click “Tools”, then “Macros”, then “Macros”.

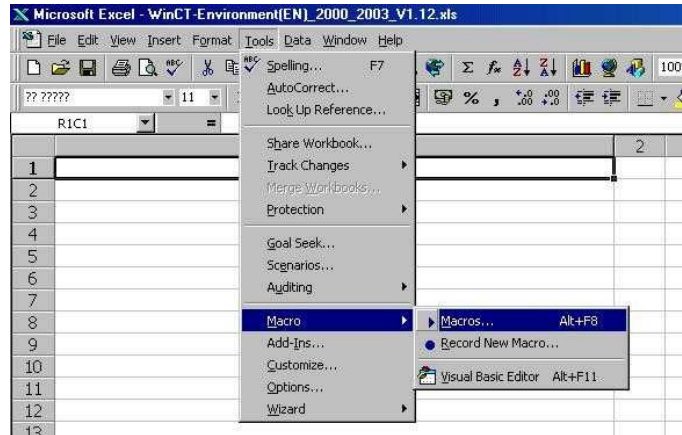


Fig.13

Step 2 Executing a macro

Select “Analysis” and then click “Run”.

The main menu will be displayed.



Fig.14

8.b Displaying the Main Menu (for Excel 2010)

Step 1 Displaying macro shortcut keys

If macros are not displayed in the Excel menu, right click on the menu tab, and then click on “Customize Quick Access Toolbar”.

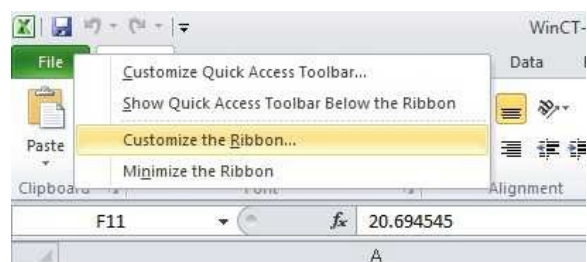


Fig.15

Step 2 Select “Customize the Ribbon”, then check “Developer” in the main tab on the right side, then click “OK”.

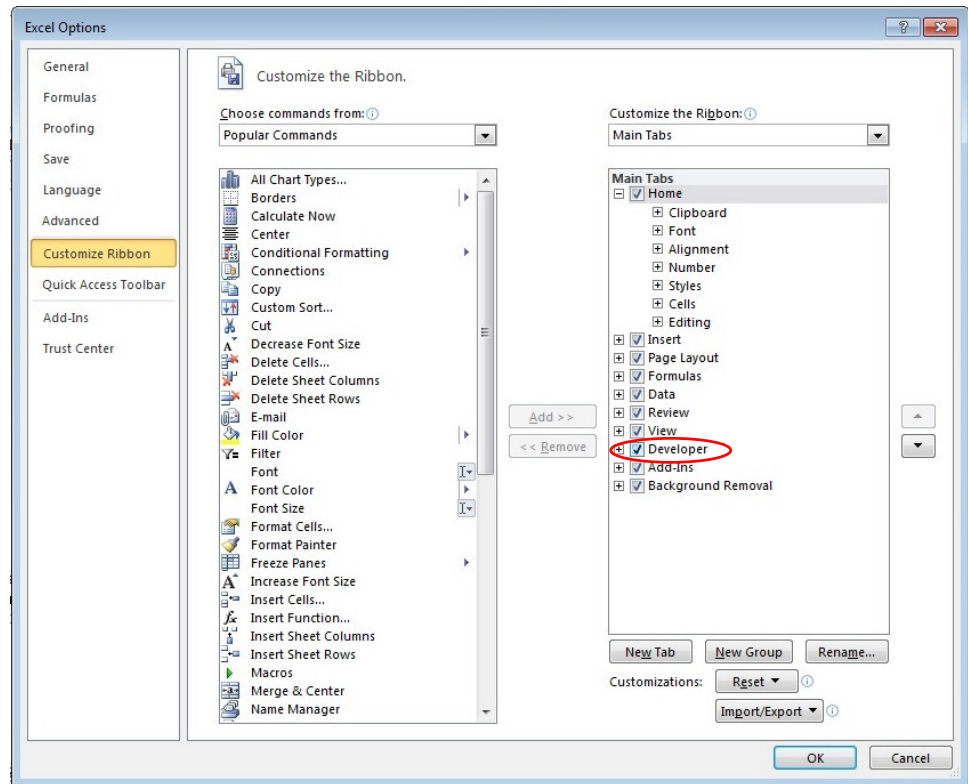


Fig.16

Step 3 Click the “Developer” menu tab, then click “Macros”

Step 4 Run the macro

Select “Analysis” and then click “Run”

The main menu will be displayed.



Fig.17