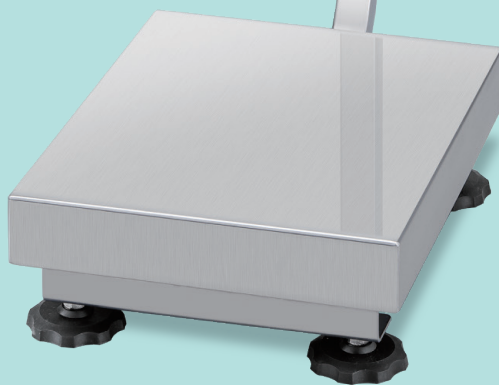


Waterproof Platform Scales

# FG-CWP Series



M-size platform (30 kg)



L-size platform (60 kg / 150 kg)



*Weigh efficiently,  
and wash effectively*

# Introducing A&D's Highly Washable All Stainless Steel Platform Scales

While realizing fast and accurate weighing, A&D's FG-CWP series of new waterproof platform scales allow cleaning with alcohol as well as rinse with water. This makes the series suitable for use in environments where avoiding hazards of contamination is imperative, such as food-processing factories.

## IP67 dust & waterproof

In accordance with the IP67 rating of the IEC/EN standard 60529, the FG-CWP series is designed to prevent the intrusion of water even while immersed to a depth of 1 meter for 30 minutes. The scale also permits no particulate matters such as wheat flour or seasoned powder, which can damage the device, inside the housing.



“Also being easy to wash is critical for hygiene control.”

## All stainless-steel construction

The stainless steel\*<sup>1</sup> surface is resistant to rust/corrosion and scratches. Also being easy to wash is critical for hygiene control. Further, the display unit (including the front panel), weighing pan, pole and frame can be cleaned using alcohol.\*<sup>2</sup>

\*1 Display unit, weighing pan, pole and frame: SUS304  
Load cell: SUS420J-2 with protective coating

\*2 Diluted to 70% or less

## High-speed measurement of 1 second\*<sup>3</sup>

The fast, efficient weighing increases productivity while significantly reducing operator frustration.

\*3 Typical when the readability is set to normal  
(factory setting)

“You can easily save time and costs with these lights.”

## Bright and multi-colored LED comparator lights

With highly intuitive comparator lights, check weighing (judging whether the measured weight is within the designated limits) becomes far more accurate and efficient than with a numeric display alone. For later use and simple changeover, the scale stores up to 10 comparator limit settings. You can easily save time and costs with these lights.



### ■ Auto-tare and negative comparison functions

The scale can perform tare automatically when the weight reaches the set target range. Additionally, negative values can be used as comparator limits. With these functions combined, you can perform "take-away" checkweighing, which is a weighing method where a target amount of a substance is repeatedly removed from the container with no key press.

## USB cable (3 m) for both power supply and data communication

The FG-CWP series receives power supply via USB (Type-A plug), which can be connected to either an AC adapter (provided as standard), a USB port of a PC, or an off-the-shelf mobile battery.\*4 Further, when connected to a PC, bi-directional data communication between the scale and the PC is possible using Virtual COM.\*5 (The WinCT data communication software is available for free download from A&D's website.)

\*4 For reference, continuous operation time with an off-the-shelf mobile battery (10,000 mAh) is estimated to be approx. 77 hours with backlight on.

\*5 Installation of the dedicated driver software is required for Windows 8.1 or earlier.

## Other useful features

- ✓ Large LCD digits (30 mm character height) with white backlight that provides excellent visibility in dim light
- ✓ Four selectable weighing resolutions: 1/3,000, 1/6,000 (or 1/7,500), 1/12,000 (or 15,000), and 1/30,000
- ✓ Display hold function that makes it easy to read and record the display value when external disturbances can occur unexpectedly
- ✓ Adjustable response characteristics to optimize performance under the given environmental condition (e.g. vibration) at the location
- ✓ Counting mode to count a number of small pieces of the same weight instantly and precisely
- ✓ Freely adjustable display angle to suit the convenience of individual operators
- ✓ Password lock and key restriction functions to prevent operators from making unwanted changes to the scale settings
- ✓ Impact shock detection (ISD) function that helps avoid errors or damage to the load cell due to impact loads



Freely adjustable display angle

# Specifications

		FG-30KCMWP	FG-60KCLWP	FG-150KCLWP
kg	Capacity	30	60	150
	Readability	0.001 / 0.002 / 0.005* <sup>i</sup> / 0.01	0.002 / 0.005 / 0.01* <sup>i</sup> / 0.02	0.005 / 0.01 / 0.02* <sup>i</sup> / 0.05
g	Capacity	30000	N/A	
	Readability	1 / 2 / 5* <sup>i</sup> / 10		
lb	Capacity	66	130	330
	Readability	0.002 / 0.005 / 0.01* <sup>i</sup> / 0.02	0.005 / 0.01 / 0.02* <sup>i</sup> / 0.05	0.01 / 0.02 / 0.05* <sup>i</sup> / 0.1
oz	Capacity	1050	2100	5200
	Readability	0.05 / 0.1 / 0.2* <sup>i</sup> / 0.5	0.1 / 0.2 / 0.5* <sup>i</sup> / 1	0.2 / 0.5 / 1* <sup>i</sup> / 2
lb-oz	Capacity	66	130	330
	Readability	0.1	1	1
Counting mode	Max. countable number	300000		
	Number of samples	5, 10, 20, 50 or 100		
Repeatability (std. deviation) [kg]		0.005	0.01	0.02
Linearity [kg]		±0.01	±0.02	±0.05
Stabilization time		Approx. 1 sec.* <sup>ii</sup>		
Sensitivity drift		±20 ppm / °C (5 to 35 °C / 41 to 95 °F)		
Display		7-segment LCD (character height: 30 mm) with backlight 3-color, 3-step LED comparator lights		
Display refresh rate		Approx. 10 times / second		
Operating environment		-10 °C to 40 °C / 14 °F to 104 °F, 85% R.H. or less (no condensation)		
Power supply		AC adapter (provided as standard), USB port* <sup>iii</sup> or mobile battery* <sup>iv</sup> via USB Type-A (5 V / 100 mA) USB cable length: Approx. 3 m		
Weighing pan size		300 × 380 mm 11.81 × 14.96 in	370 × 500 mm 14.57 × 19.69 in	
Dimensions (W × D × H)		300 × 515 × 784 mm 11.81 × 20.28 × 30.87 in	370 × 635 × 784 mm 14.57 × 25 × 30.87 in	
Weight (approx.)		11.1 kg / 24.5 lb	12.8 kg / 28.3 lb	

\*<sup>i</sup> Factory setting

\*<sup>ii</sup> Typical when the readability is set to normal (factory setting)

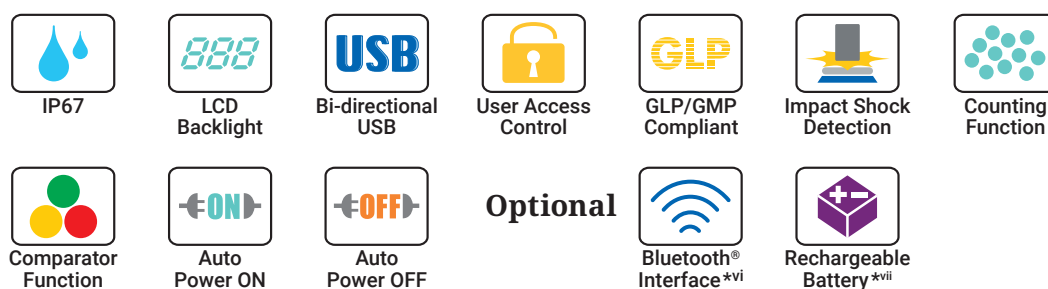
\*<sup>iii</sup> Data communication is also possible when connected to a USB port of a PC.

\*<sup>iv</sup> For reference, continuous operation time with an off-the-shelf mobile battery (10,000 mAh) is estimated to be approx. 77 hours with backlight on. (Operation is not guaranteed for all mobile batteries.)

## Options

### FG-27CWP Bluetooth® communication interface for FG-CWP\*<sup>v</sup>

\*<sup>v</sup> For bi-directional data communication with a PC, the AD-8541-PC dongle (sold separately) is required.



\*<sup>vi</sup> The Bluetooth® interface can be currently used in the US, Canada and Japan only.

\*<sup>vii</sup> Commercially-available mobile battery



## Discover Precision

A&D Company, Ltd. (JAPAN)  
URL: aand.jp

A&D Engineering, Inc. (USA)  
URL: andonline.com

A&D Australasia Pty Ltd. (Australia)  
URL: andaustalasia.com.au

A&D Instruments Ltd. (United Kingdom)  
URL: andprecision.com

<German Sales Office>  
URL: andprecision.com

A&D Korea Ltd. (South Korea)  
URL: andk.co.kr

A&D Rus Co., Ltd. (Russia)  
URL: and-rus.ru

A&D Instruments India (P) Ltd. (India)  
URL: aandindia.in

A&D Sciencetech Taiwan Ltd. (Taiwan)  
URL: aandd.com.tw

A&D Instruments Thailand Ltd. (Thailand)  
URL: thai.andprecision.com